



NOTICE TO MARINERS

No. 22 – 25th December 2019

This notice updates and replaces NtM.No.21/2019 issued on 23rd December 2019

Sub: Stationing of Offshore Marine Platform

Ref: BA Chart 3174, NtM 21/2019

Please be notified, The U.A.E Coast Guard Authority (The vital installations and coastal protection apparatus) has stationed an Offshore Marine Platform in below mentioned coordinates, at distance of 6NM northwest of Al Jazeera Hamra.

<i>Location Coordinates</i>	<i>25 43.858N 055 40.203E</i>
<i>Overall height of the platform</i>	<i>58 Meters</i>
<i>Total length of the Platform</i>	<i>38 Meters</i>
<i>Total width of the Platform</i>	<i>26 Meters</i>
<i>Night lights of the Platform</i>	<i>External white lights visible to the platform's surface facilities with a range of (5000) meters, the safe approaching distance around the platform (2000)meters</i>

All Mariners are advised to exercise caution and keep well clear of the above position while passing in the vicinity

Capt. Michael Magee
Group Harbour Master RAK Ports

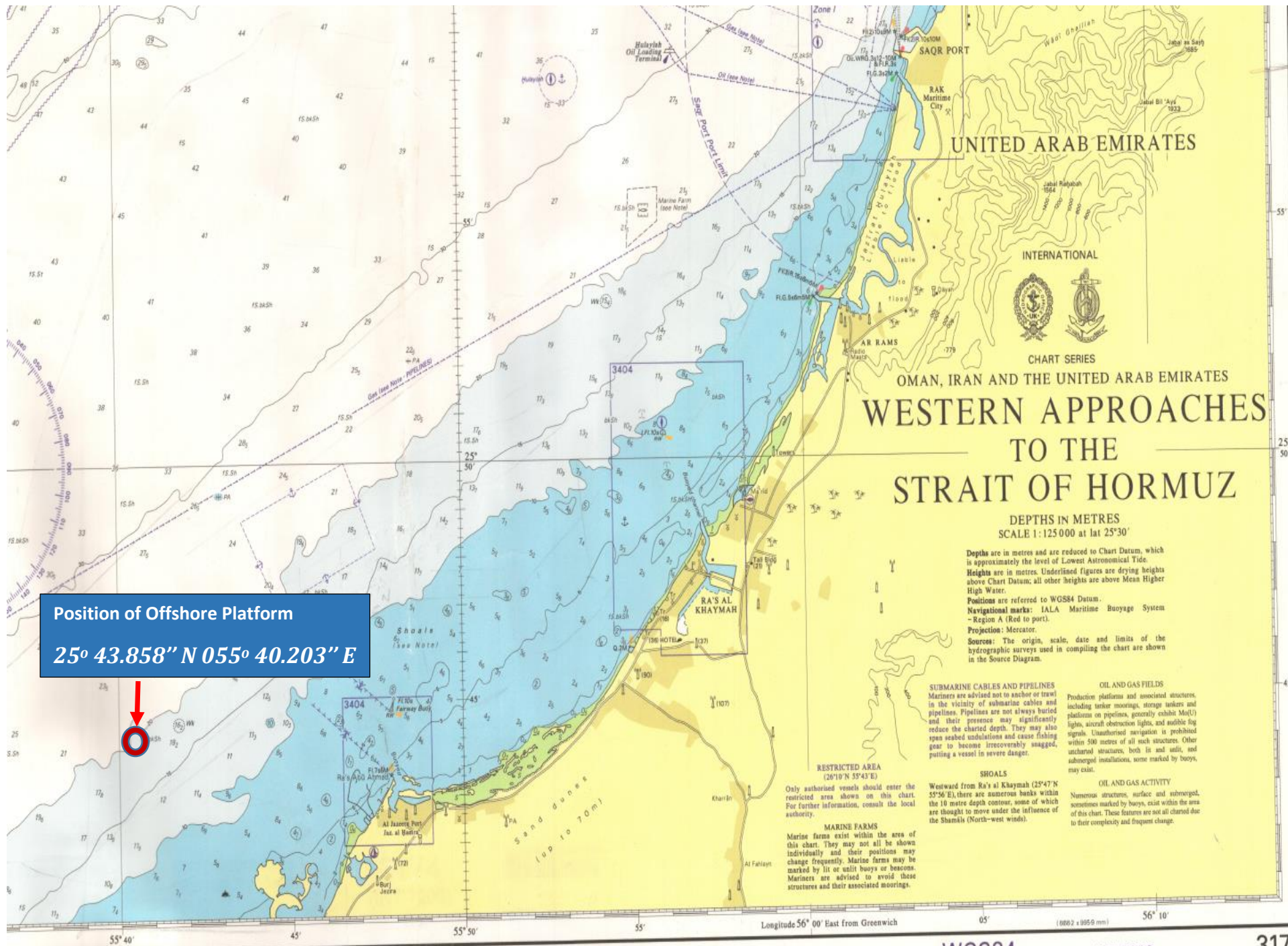
Status of previously published notices:

2017:10, 15,

2018: 24,

2019: 10, 11, 14, 15, 16, 17, 18, 19, 20

CHARTLET 3174



Position of Offshore Platform
25° 43.858" N 055° 40.203" E

UNITED ARAB EMIRATES

INTERNATIONAL CHART SERIES

OMAN, IRAN AND THE UNITED ARAB EMIRATES

WESTERN APPROACHES TO THE STRAIT OF HORMUZ

DEPTHS IN METRES
 SCALE 1:125 000 at lat 25°30'

Depths are in metres and are reduced to Chart Datum, which is approximately the level of Lowest Astronomical Tide.
 Heights are in metres. Underlined figures are drying heights above Chart Datum; all other heights are above Mean Higher High Water.
 Positions are referred to WGS84 Datum.
 Navigational marks: IALA Maritime Buoyage System - Region A (Red to port).
 Projection: Mercator.
 Sources: The origin, scale, date and limits of the hydrographic surveys used in compiling the chart are shown in the Source Diagram.

SUBMARINE CABLES AND PIPELINES
 Mariners are advised not to anchor or trawl in the vicinity of submarine cables and pipelines. Pipelines are not always buried and their presence may significantly reduce the charted depth. They may also span seabed undulations and cause fishing gear to become irreversibly snagged, putting a vessel in severe danger.

OIL AND GAS FIELDS
 Production platforms and associated structures, including tanker moorings, storage tankers and platforms on pipelines, generally exhibit Mo(U) lights, aircraft obstruction lights, and audible fog signals. Unauthorised navigation is prohibited within 500 metres of all such structures. Other uncharted structures, both in and out, and submerged installations, some marked by buoys, may exist.

RESTRICTED AREA
 (26°10' N 55°43' E)
 Only authorized vessels should enter the restricted area shown on this chart. For further information, consult the local authority.

SHOALS
 Westward from Ra's al Khaymah (25°47' N 55°56' E), there are numerous banks within the 10 metre depth contour, some of which are thought to move under the influence of the Shamals (North-west winds).

OIL AND GAS ACTIVITY
 Numerous structures, surface and submerged, sometimes marked by buoys, exist within the area of this chart. These features are not all charted due to their complexity and frequent change.

MARINE FARMS
 Marine farms exist within the area of this chart. They may not all be shown individually and their positions may change frequently. Marine farms may be marked by lit or unlit buoys or beacons. Mariners are advised to avoid these structures and their associated moorings.