



NOTICE TO MARINERS

No. 02 – 10th January 2021

Sub: Sea Trials by Barge Stingray at Ras Al Khaimah Port Anchorage

Ref : BA Chart 3174, 3404 and Anchor Pattern Chartlet.

Please be notified that M/s. Van Oord Marine Ingenuity LLC are scheduled to conduct pre-readiness project trials of their pipe laying barge **Stingray** at Ras Al Khaimah Port Anchorage between the 14th to 31st Jan 2021.

During the sea trials B-Stingray will deploy ten anchors and conduct test trial deployment and recovery operations of underwater pipelines with-in the following co-ordinates :-

- 25 54.17N, 55 48.03E
- 25 55.41N, 55 51.12E
- 25 54.49N, 55 51.57E
- 25 53.25N, 55 48.48E

During the above period, vessel activities / operations are not permitted with in the Ras Al Khaimah Port anchorage unless agreed with Stingray. Any vessels heading towards the Ras Al Khaimah Port anchorage are advised to contact with Master of Stingray and follow below communication procedure:

- Establish Communication with Master of Stingray on VHF Channel 16.
- Purpose of entry to be discussed and agreed with Stingray.
- Number of anchors and anchor positions / patterns to be confirmed with Stingray.
- Prior to anchorage area entry, confirm the vessel is familiar with anchor locations and any obstructions.
- If an approved vessel approaches Stingray, the approach side (Starboard or Portside) to be confirmed with Stingray.
- Safe approach / exit routes and stand-off location to be identified and agreed.
- Prior to entry inside anchor pattern, vessels to confirm satisfactory operations of all propulsion and maneuvering / steering control with Stingray.

Following additional vessels will assist Stingray during the sea trials: -

- Tug **Astro Canopus** - Towing Tug + Survey vessel
- Tug **Susanna** - Anchor Handling Operations
- **Inchcape 5** - Crew boat

Mariners are advised to keep clear of above mentioned area and proceed with extreme caution while transiting above said area during the trials. The dates and timings stated above may be adjusted for weather or operational needs. Vessels movements should be coordinated with Ras Al Khaimah Port / Saqr Port Control.

Capt. Michael Magee

Group Harbour Master, RAK Ports

Status of previously published notices:

2020: 01, 04, 07, 09, 16, 17, 18, 19, 21, 24

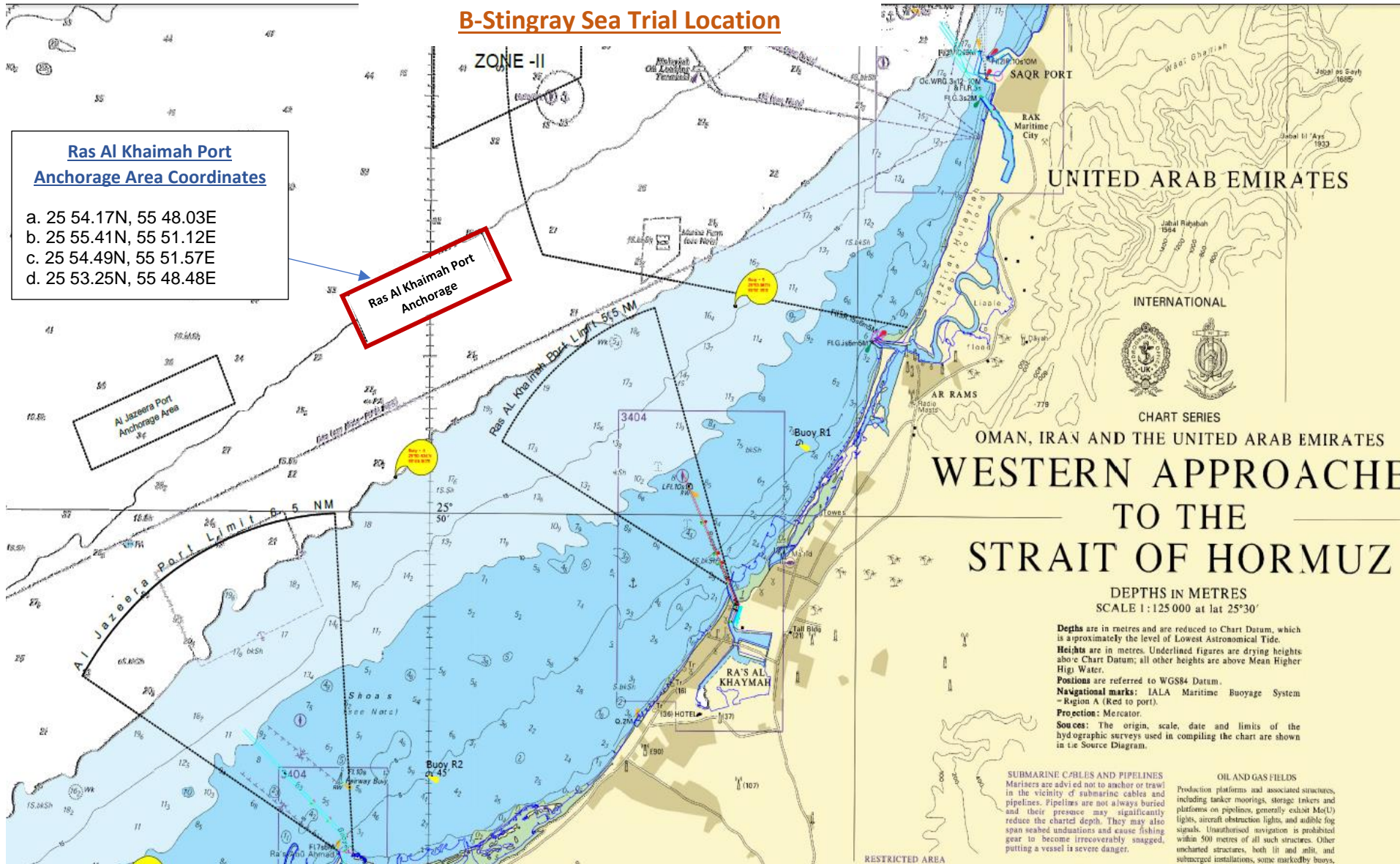
2021: 01

B-Stingray Sea Trial Location

Ras Al Khaimah Port Anchorage Area Coordinates

- a. 25 54.17N, 55 48.03E
- b. 25 55.41N, 55 51.12E
- c. 25 54.49N, 55 51.57E
- d. 25 53.25N, 55 48.48E

Ras Al Khaimah Port
Anchorage



Depths are in metres and are reduced to Chart Datum, which is approximately the level of Lowest Astronomical Tide.
Heights are in metres. Underlined figures are drying heights above Chart Datum; all other heights are above Mean Higher High Water.
Positions are referred to WGS84 Datum.
Navigational marks: IALA Maritime Buoyage System - Region A (Red to port).
Projection: Mercator.
Sources: The origin, scale, date and limits of the hydrographic surveys used in compiling the chart are shown in the Source Diagram.

SUBMARINE CABLES AND PIPELINES
Mariners are advised not to anchor or trawl in the vicinity of submarine cables and pipelines. Pipelines are not always buried and their presence may significantly reduce the charted depth. They may also span seabed undulations and cause fishing gear to become irreversibly snagged, putting a vessel in severe danger.

OIL AND GAS FIELDS
Production platforms and associated structures, including tanker moorings, storage tankers and platforms on pipelines, generally exhibit Mo(U) lights, aircraft obstruction lights, and audible fog signals. Unauthorised navigation is prohibited within 500 metres of all such structures. Other uncharted structures, both lit and unlit, and submerged installations, some marked by buoys,