



# **NOTICE TO MARINERS**

**No. 08 – 25<sup>th</sup> Nov 2022**

**Sub: Re-Positioning of Special Marker Buoy**

Ref : BA Chart 3174, 3404, NtM 05/2022, attached Chartlet 3174

Please be notified that the Special Marker buoy deployed at offshore Al Jeer Port ( $26^{\circ} 03.234'N$   $056^{\circ} 03.624'E$ ) has been re-positioned to below mentioned coordinates. Chartlet indicating new location of buoy is attached herewith.

| Buoy Type       | Colour | Flash<br>Characteristic | New location Coordinates |                      | Purpose/ Remarks                                                             |
|-----------------|--------|-------------------------|--------------------------|----------------------|------------------------------------------------------------------------------|
| Special<br>Mark | Yellow | QF Yellow               | <b>25° 52.223'N</b>      | <b>055° 51.205'E</b> | Ocean data acquisition.<br><i>Expected to be on station<br/>for one year</i> |

All Mariners are advised to exercise caution and keep clear of the above-mentioned buoy while transiting and operating in the vicinity.

**Capt. Emadeldin Hashem**  
Deputy Harbour Master RAK Ports

*Status of previously published notices:*

2020 : 01, 2021: 21

2022 : 01, 02, 04, 05, 06, 07

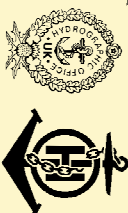
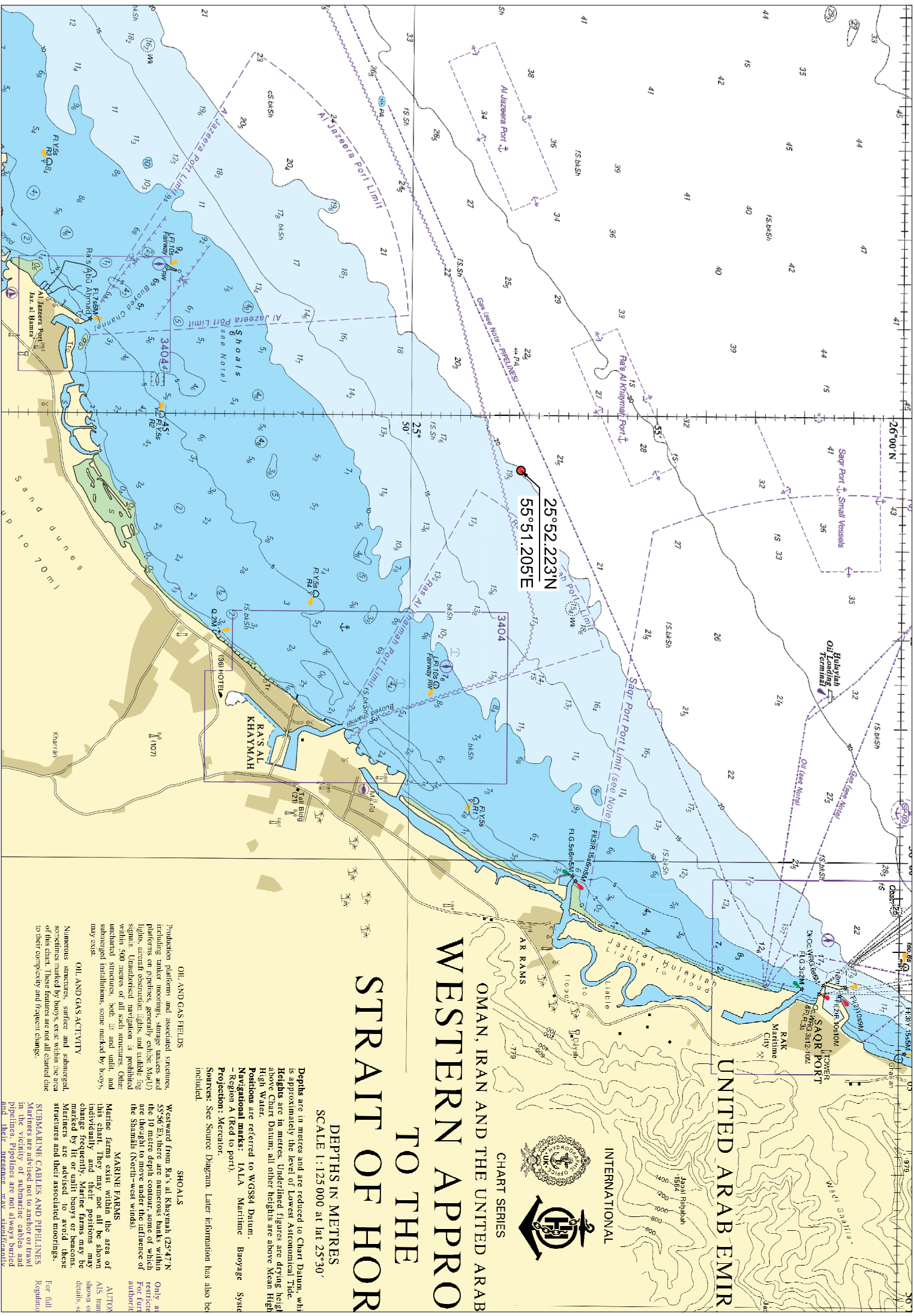


CHART SERIES

# OMAN, IRAN AND THE UNITED ARAB WESTERN APPROACH TO THE STRAIT OF HORMUZ

DEPTHS IN METRES  
SCALE 1:125,000 at lat 25°30'

Depths are in metres and are reduced to Chart Datum, which is approximately the level of Lowest Astronomical Tide. Heights are in metres. Underlined figures are drying heights above Chart Datum; all other heights are above Mean High High Water.

Positions are referred to WGS84 Datum.

Navigation marks: IALA Maritime Buoyage System - Region A (Red to port).

Projection: Mercator.

Sources: See Source Diagram. Later information has also been included.

## OIL AND GAS FIELDS

Production platforms and associated structures, including tanker moorings, storage tanks and platforms on pipelines, generally exhibit Mo(U) lights, aircraft obstruction lights and audible fog signals. Unaided navigation is prohibited within 500 metres of all such structures. Other uncharted structures, both lit and unlit, and submerged installations, some marked by buoys, may exist.

## OIL AND GAS ACTIVITY

Numerous structures, surface and submerged, sometimes marked by buoys, exist within the area of this chart. These features are not all entered due to their complexity and frequent change.

## MARINE FARMS

Marine farms exist within the area of this chart. They may not all be shown individually and their positions may change frequently. Marine farms may be marked by lit or unlit buoys or beacons. Structures are advised to avoid these structures and their associated moorings.

## ALTON

For full details of submarine cables and pipelines, see the separate chart of the Strait of Hormuz. For full details of submarine cables and pipelines, see the separate chart of the Strait of Hormuz.