



NOTICE TO MARINERS

No. 18 – 23rd September 2024

Sub: Positioning of Special Mark Buoy at Offshore RAS Al Khaimah

Ref : BA Chart 3174, attached Chartlet 3174

Please be notified that the Special Mark Data Buoy will be positioned near *Saleh Oilfield, Offshore RAS Al Khaimah* on 23rd September 2024 at below mentioned coordinates. Chartlet indicating the position of buoy is attached herewith.

Buoy Type	Colour	Flash Characteristic	Location Coordinates		Purpose / Remarks
Special Mark	Yellow	QF Yellow	26° 08.600N	55° 42.800E	Ocean data acquisition. <i>Expected to be on station for one year.</i>

All Mariners are advised exercise caution and keep clear of the above-mentioned buoy while transiting and operating in the vicinity. Also, advised to update respective navigational charts.

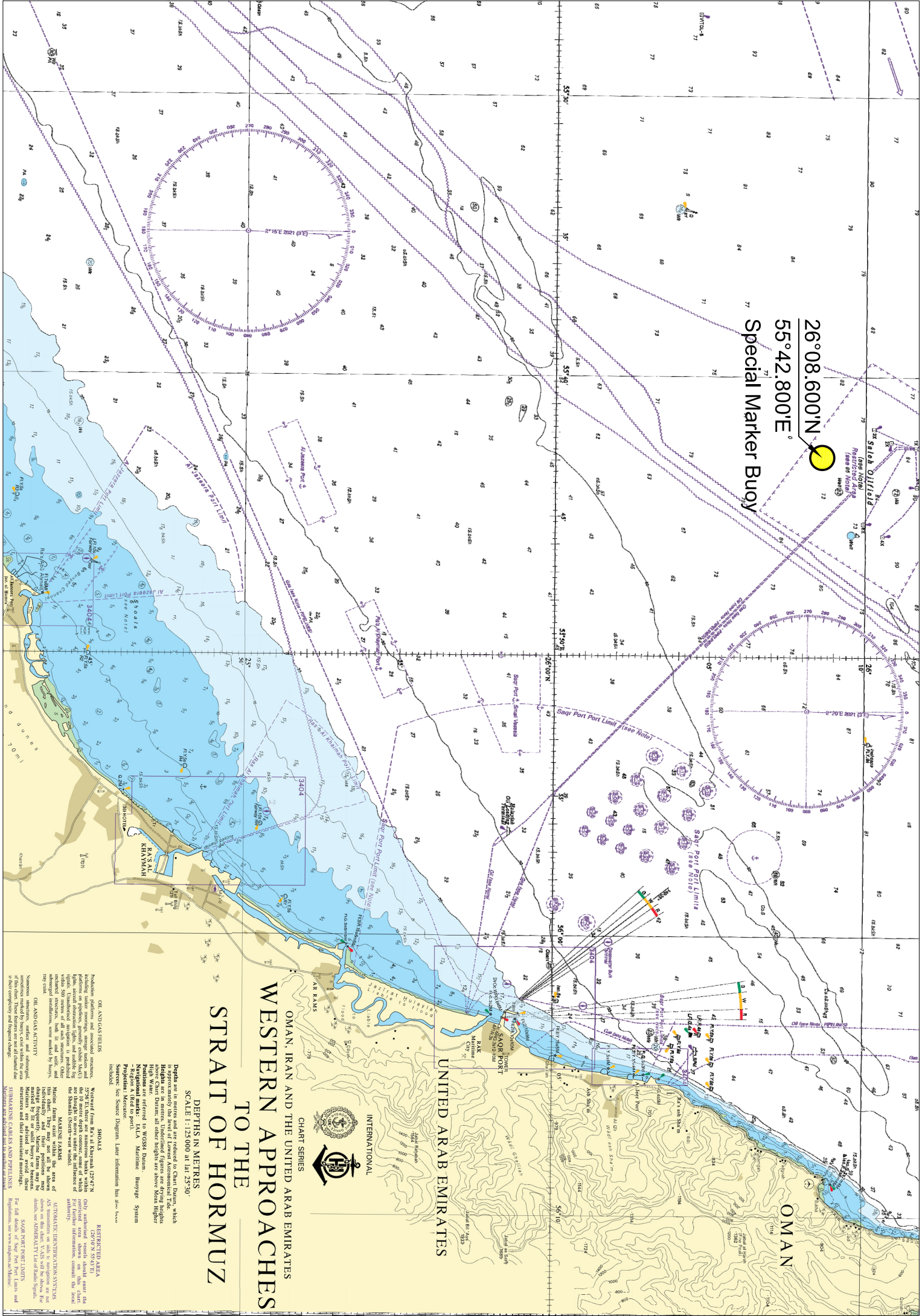
Note: NtM No. 08/2022 issued on 25th Nov 2022 has been cancelled.

Captain Emadeldin Hashem
Deputy Harbour Master

Status of previously published notices:

2020: 01, 2021: 21, 2022: 06, 2023: 07, 12, 14

2024 : 01, 02, 03, 06, 07, 08, 09, 10, 11, 13,14, 16,17



26°08.600'N
55°42.800'E
Special Marker Buoy

OMAN, IRAN AND THE UNITED ARAB EMIRATES
WESTERN APPROACHES
TO THE
STRAIT OF HORMUZ



CHART SERIES
INTERNATIONAL
UNITED ARAB EMIRATES

DEPTHS IN METRES
SCALE 1:125 000 at lat 25°30'

Depths are in metres and are reduced to Chart Datum, which is approximately the level of Lowest Astronomical Tide. Underlined figures are drying heights. High Water, referred to World Datum, is shown in black figures. Navigational marks: IALA Maritime Buoyage System - Region A (Red to port).
Note: See Section Diagram. Later information has been included.

SHOALS

Restricted Area (26°07'N 55°41'E) - authorized vessels should enter the area only under the supervision of the competent authority. For further information, consult the local authority.

ATMOSPHERIC DISTURBANCE SYSTEMS - shown on this chart. Vessels will be shown in this chart. Vessels will be shown in this chart. Vessels will be shown in this chart.

SAOAR PORT LIMITS - For full details of Saor Port Limits and Regulations see www.marine.gov.uk

OMAN AND GAS HELLS - Production platform and associated structures. Platforms are shown on this chart. Lights, underlined figures are drying heights. High Water, referred to World Datum, is shown in black figures. Navigational marks: IALA Maritime Buoyage System - Region A (Red to port). Note: See Section Diagram. Later information has been included.