

# NOTICE TO MARINERS

**No. 03 – 22<sup>nd</sup> January 2025**

**Sub: Notification of Borehole Survey**

Ref. : BA Chart 3404, Borehole survey locations drawing.

In connection with the Saqr Port 2.0 project, a Borehole survey will be conducted by ACES (*Arab Center for Engineering Studies, Abu Dhabi*) using Jack-up Pontoon from 22<sup>nd</sup> Jan to 1<sup>st</sup> week of Mar 2025, at the premises of RMC Channel and RMC reclamation area. the survey is weather dependent and subject to delay. Details of the survey locations and coordinates are shown in the attached drawing.

The Jack-up Pontoon will be towed to the survey locations by using tug boats and will be operating 24x7 basis. During survey operations Jack-up Pontoon will display shapes and lights as required by International and local regulations, and maintain listening watch on VHF 69. Survey team will be in regular contact with VTS and keep updated about their intended movements.

**Plants and Equipment utilised for Survey :**

- ❖ One Deck Pontoon (Size : Length 12m x Width 8m x Height 1.5m, with 4 legs)
- ❖ One Drilling Rig (mounted on pontoon).
- ❖ 02 speed boats (2 x 250HP).



**Emergency Contact Details**

Name	Department	Position	Tel. No.
Anas Barakat	General	General Manager	+971 55 4706222
Dr. Mohammad Musthafa	Geotechnical	Project Manager	+971 55 4706353
Sufian Al Tamimi	Geotechnical	Head of Operations	+971 55 4706263
Kurian Jacob	Geotechnical	Sr. Geotechnical Engineer	+971 55 2489637

Mujibuddin Shaik	Geotechnical	Site Geologist	+971 55 4706366
Muhammad Faizan	HSE	Safety Officer	+971 55 1061556
Haitham Youssef	Site	Sr. Geologist	+971 55 4706261
Muhammad Khaleel	Site	Geologist	+971 56 9910838

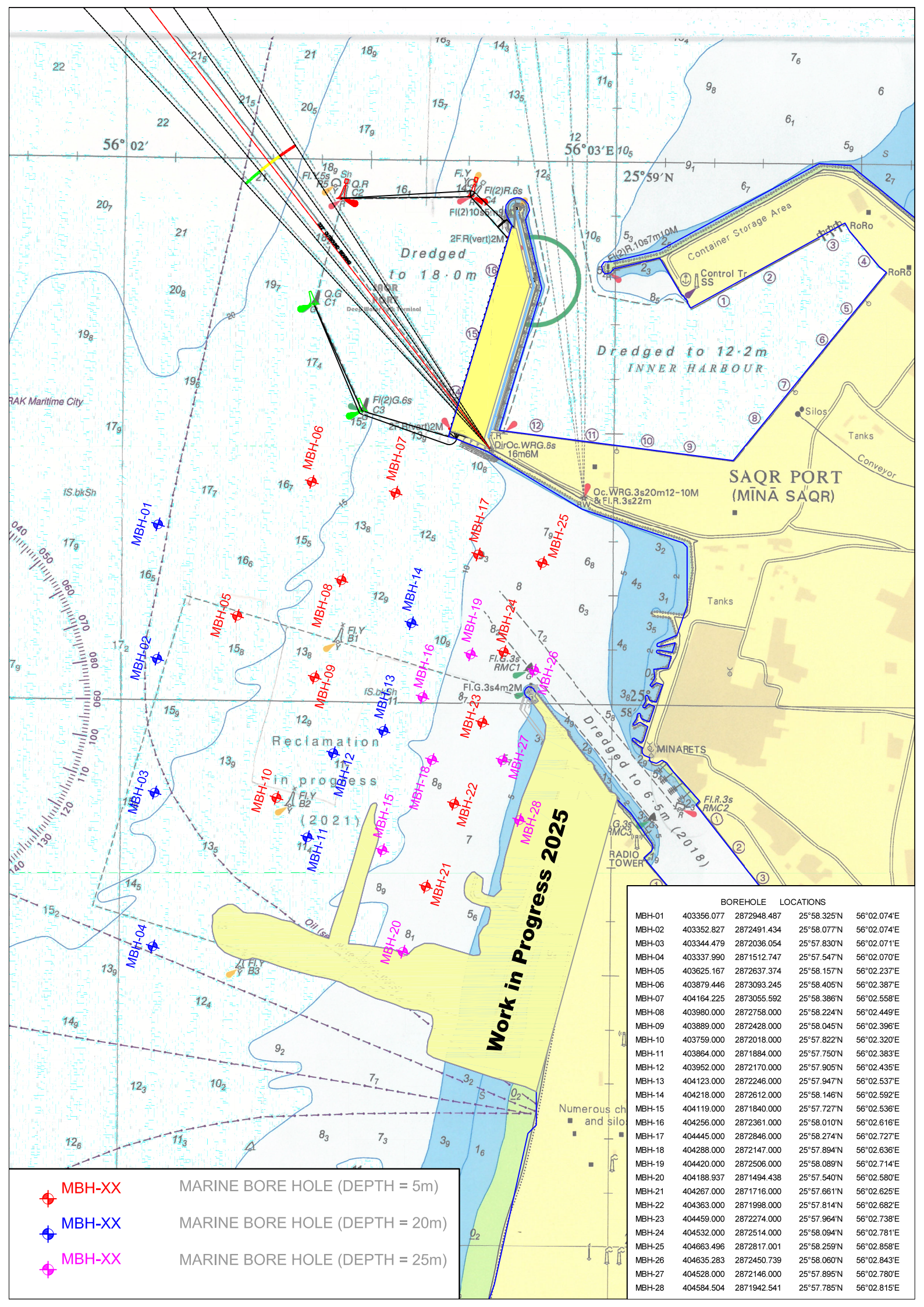
All Mariners are advised to give the Jack-up Pontoon a wide berth and proceed with extreme caution while transiting in the area.

**Captain Michael Magee**  
Group Harbour Master RAK Ports

*Status of previously published notices:*

2020: 01, 2021: 21, 2022: 06, 2023: 07, 12, 14

2024 : 01, 02, 03, 06, 07, 08, 09, 10, 11, 13,14, 16,17, 18



- ◆ MBH-XX MARINE BORE HOLE (DEPTH = 5m)
- ◆ MBH-XX MARINE BORE HOLE (DEPTH = 20m)
- ◆ MBH-XX MARINE BORE HOLE (DEPTH = 25m)

	BOREHOLE	LOCATIONS		
MBH-01	403356.077	2872948.487	25°58.325'N	56°02.074'E
MBH-02	403352.827	2872491.434	25°58.077'N	56°02.074'E
MBH-03	403344.479	2872036.054	25°57.830'N	56°02.071'E
MBH-04	403337.990	2871512.747	25°57.547'N	56°02.070'E
MBH-05	403625.167	2872637.374	25°58.157'N	56°02.237'E
MBH-06	403879.446	2873093.245	25°58.405'N	56°02.387'E
MBH-07	404164.225	2873055.592	25°58.386'N	56°02.558'E
MBH-08	403980.000	2872758.000	25°58.224'N	56°02.449'E
MBH-09	403889.000	2872428.000	25°58.045'N	56°02.396'E
MBH-10	403759.000	2872018.000	25°57.822'N	56°02.320'E
MBH-11	403864.000	2871884.000	25°57.750'N	56°02.383'E
MBH-12	403952.000	2872170.000	25°57.905'N	56°02.435'E
MBH-13	404123.000	2872246.000	25°57.947'N	56°02.537'E
MBH-14	404218.000	2872612.000	25°58.146'N	56°02.592'E
MBH-15	404119.000	2871840.000	25°57.727'N	56°02.536'E
MBH-16	404256.000	2872361.000	25°58.010'N	56°02.616'E
MBH-17	404445.000	2872846.000	25°58.274'N	56°02.727'E
MBH-18	404288.000	2872147.000	25°57.894'N	56°02.636'E
MBH-19	404420.000	2872506.000	25°58.089'N	56°02.714'E
MBH-20	404188.937	2871494.438	25°57.540'N	56°02.580'E
MBH-21	404267.000	2871716.000	25°57.661'N	56°02.625'E
MBH-22	404363.000	2871998.000	25°57.814'N	56°02.682'E
MBH-23	404459.000	2872274.000	25°57.964'N	56°02.738'E
MBH-24	404532.000	2872514.000	25°58.094'N	56°02.781'E
MBH-25	404663.496	2872817.001	25°58.259'N	56°02.858'E
MBH-26	404635.283	2872450.739	25°58.060'N	56°02.843'E
MBH-27	404528.000	2872146.000	25°57.895'N	56°02.780'E
MBH-28	404584.504	2871942.541	25°57.785'N	56°02.815'E